



# **SIGN ASSEMBLY SOLUTIONS**

FOR SIGN ASSEMBLY APPLICATIONS



## BROCHURE **SECTIONS**

**03**

### **Introduction**

Sign Assembly & Manufacturing Overview

**04**

### **The Experts in Sign Bonding Adhesives**

About Chemical Concepts

**05**

### **Value Proposition**

Sign Problems Disappear

**06**

### **Featured Brands**

To Help You Find the Right Brands

**07**

### **Product Selections**

With Their Benefits

**14**

### **Get In Touch with the Team**

Contact Chemical Concepts

## SIGN INDUSTRY OVERVIEW: **WHEN VENDORS DON'T CUT IT**

In uncertain economic conditions filled with skilled labor shortages, supply chain issues, and rapidly changing market demands, countertop fabricators need more than a vendor. They need a partner – one that brings real solutions to fabrication challenges, offering valuable advice, and troubleshooting problems when they inevitably occur.

Strong partnerships are a must for all facets of the business, including your assembly operations. We can help improve processes and aesthetics, maintain supply continuity, reduce labor costs, and achieve your strategic objectives using our 100+ years of combined experience.

### Proud Members/Sponsors of the ISA:



INTERNATIONAL SIGN ASSOCIATION



## WORK WITH CHEMICAL CONCEPTS **THE BONDING EXPERTS**

Chemical Concepts is a business-to-business provider of engineered solutions involving adhesives, sealants, tapes and specialty fasteners for the sign fabrication industry.

With 60+ years of pioneering the use of adhesives, Chemical Concepts takes pride in providing custom-engineered solutions designed to meet your sign fabrication needs.

We consult with fabricators every day to overcome challenges in design, process and labor by providing high-performance products and expert support, delivered on time.

**We're more than just an adhesive and fastener supplier. We're a solutions provider.**

# CHEMICAL CONCEPTS MAKES **SIGN PROBLEMS DISAPPEAR**

We help sign fabricators solve challenging problems. We're not industry generalists.  
We are product assembly experts providing solutions.

**We can help you:**



## **Get The Right Adhesive**

Find the right adhesive for your application, and get full confidence the solution will work.



## **Increase Output**

Improve processes, decrease project times and cut labor costs.



## **Solve Challenging Problems**

Get expert support you need on adhesives that you cannot find with generalist distributors.



## **Improve Aesthetics**

Upgrade the aesthetics of your finished projects by creating beautiful and seamless signs with less time and effort.



## **Increase Efficiency**

Improve efficiency and reduce labor costs for sign projects.



## **Ensure Consistent Supply**

Consolidate your supply for consumables including adhesives, tapes, mechanical fasteners, and more.



## **Reduce Liability**

Prioritize safety and minimize risks with durable, reliable, and long-lasting signage that instills confidence in your customers.

## FEATURED **BRANDS**

Chemical Concepts maintains relationships with many of the leading brands in adhesives, tapes and specialty fasteners. Those relationships mean, the highest quality products, unmatched technical support, and access to a huge portfolio of innovative technology to match with our customers' needs.

**LORD**

**Specialinsert**

**HUNTSMAN**

Enriching lives through innovation

**WELD-ON**

**Tensorgrip**

**PLEXUS**

**tesa**

**Sika**

**ASI**  
American Sealants, Inc.

**SILCO**  
INCORPORATED

**BOA  
BOND**

**NEW PRODUCTS**



**HUNTSMAN**

**Araldite 2080/2081**  
Low Odor Toughened Acrylic Structural Adhesive

- High strength & flexibility
- Non-flammable
- High elongation for metals, composites and some plastics
- Available in two versions of shorter and longer reactivity time



**Specialinsert**

**FAST-CON®**

Metal Snap Fastening System

- Quick and easy installation
- Replaces Z clips and other mounting hardware
- Flame and corrosion resistant
- Long-lasting life compared to the most common plastic systems



**Chem-Set™**  
**VST LSE Tapes**

High Conformable Acrylic Foam Tape

- High bond tape for difficult materials
- Bonds low surface energy plastics, e-coated parts, and more
- Bonds most LSE materials without the need for primers



**Chem-Set™**  
**UltraLok 420-1**

Two-Part Methacrylate, Flexibilized, Structural Bonding Adhesive

- Working time of 3 to 7 minutes
- Superior bond strength
- Extreme durability
- Excellent impact and weathering properties



**WELD-ON®**  
**Weld-On 30**

Two-Component, Low VOC Reactive Structural Adhesive

- Forms a high strength bond within an hour
- Bonds to a wide variety of metals, plastics, wood, concrete, brick, and many other substrates
- High environmental resistance



**LORD®**  
**7800 A/B**

Snap Cure Urethane Adhesive

- Fast-curing, flexible adhesive for painted metal and plastic
- Rapid strength development
- No odor
- Flexible



**HUNTSMAN**  
**Araldite 2053**

5 & 15 Minute Acrylic Adhesive

- 10:1 structural metal bonder
- Economical, workhorse adhesive
- 50% elongation for tough, durable bonds



**Tensorgrip®**  
**P300**

Multi-Purpose Contact Adhesive

- Fast, high tack
- High heat resistance (over 220°F/105°C)
- Fast drying with long open time
- Compare to 3M 90 Spray adhesive



**Specialinsert**

**ATC Bonding Fasteners**  
Adhesive Is Distributed Evenly Throughout The Bonding Area

- 50% stronger in shear strength
- 25% stronger in tensile than standard design
- No waste
- Perfect design
- Excellent performance



**PLEXUS**  
**H4110**

Faster Alternative To Construction Adhesive

- Excellent environmental resistance
- Elastic bonding
- Excellent gap filling and thixotropic
- Easy to use 1:1 ratio



**PLEXUS**  
**MA8105**

Advanced Direct-To-Metal, Two-Part Methacrylate Structural Adhesive

- Versatile 1:1 mix ratio
- Offering primerless adhesion to metals (including galvanized steel), coatings, plastics including nylon (polyamide), and composites



**Chem-Set™**  
**UltraLok 607**

Clear Methacrylate Adhesive

- Ideal for applications requiring clear bonds
- Commonly used in signs, displays, electronics, and other industrial bonding applications
- Working time of 12 to 16 min and a fixture time of 18 to 22 min

**METAL BONDING**



**LORD® Signlok Series**

For Bonding Metals And Engineered Plastics

- Conveniently packaged in (225 mL) cartridges
- Replace welding, riveting and other mechanical fasteners
- 90% full cure within one hour
- Available in a range of work times



**LORD® 400 Series**

Two Part Acrylic Adhesive

- Replaces welding for bonding metals and plastics
- For channel letter and box frame assembly plus stud bonding
- Can be powdercoated
- Available in a variety of curing schedules



**LORD® Maxlok Series**

Replaces Welding, Brazing, Riveting And Other Mechanical Fastening Methods

- High peel and shear strength
- Glass beads for precision bondline
- No surface tack; paintable
- 4:1 ratio
- Environmentally resistant



**LORD® Signlok 810**

Low Read-Through Acrylic Adhesive

- For bonding ACM panels (Dibond, Alucobond)
- For thin gauge material bonding
- No warping or “telegraphing”
- Glass beads for precision bondlines

**GENERAL PURPOSE ADHESIVES**



**LORD® 7550 A/C**

Two-Component Clear Urethane Adhesive System

- Bonds trimcap, polycarbonate, and acrylic
- Optically clear adhesive
- UV-resistant



**LORD® 7545**

Two-Component Urethane Adhesive System

- Bonds plastics and foam board
- Cross bonds metals to engineered plastics
- Great for outdoor assemblies



**LORD® 310 A/B**

Two-Component Epoxy Adhesive System

- The ideal anchoring adhesive for stud mounting
- Bare metal to HDU
- Bare metal to wood
- Excellent engineering properties



**LORD® 7610DTM**

Direct-to-Metal Seam Sealer & Adhesive

- General purpose adhesive and seam sealer
- Seals light leaks
- Sealer for channel letter cans
- Water intrusion barrier or sealant

**WELD-ON ADHESIVES**



**WELD-ON® Weld-On 45**

Structural Adhesive for Dissimilar Materials

- Fast-curing, two-component adhesive that forms high-strength bonds
- Bonds a wide range of materials, including metals and plastics
- Excellent corrosion resistance
- Ideal for outdoor applications



**WELD-ON® Weld-On 3**

Water-thin Solvent Cement

- Water-thin, moderately fast set solvent cement for acrylics
- Bonds styrene, butyrate and polycarbonate to themselves
- Working time: 1-2 minutes
- Fixture time: 3 minutes



**WELD-ON® Weld-On 16**

Medium Bodied Solvent Cement

- Medium bodied fast set solvent cement for acrylics
- Bonds styrene, butyrate (trim cap), and polycarbonate to themselves
- Working time: 5-6 minutes
- Fixture time: 10 minutes



**WELD-ON®**

**Weld-On 55 / Weld-On 58**

Clear Trim Cap Adhesive

- Optically clear Urethane
- Used for bonding trim cap, polycarbonate, PETG, and ABS
- Room temperature cure
- UV resistant



**ULTRALOK SERIES ADHESIVES**



**Chem-Set™  
UltraLok 420GB**

**Two-Part Methacrylate,  
Structured Bonding Adhesive**

- Metal, plastic, and composite bonding structural adhesive
- 10:1 mix ratio
- Fast set (6-10 min)
- Glass beads for precision bondline



**Chem-Set™  
UltraLok 3121**

**Low Read-Through  
Acrylic Adhesive**

- For thin gauge material bonding
- No warping or “telegraphing”
- Glass beads for precision bondlines
- Extremely high impact strength



**Chem-Set™  
UltraLok 300**

**Two-Part Methacrylate,  
Structured Bonding Adhesive**

- Metal, plastic, and composite bonding structural adhesive
- 1:1 mix ratio
- Fast Set (3-6 min)
- Great shock and impact resistance



**Chem-Set™  
UltraLok 310**

**Two-Part Methacrylate,  
Structured Bonding Adhesive**

- Metal, plastic, and composite bonding structural adhesive
- 1:1 mix ratio
- Medium set (8-12 min)
- Great shock and impact resistance

**SPECIALTY ADHESIVES**



**Chem-Set™  
TrimGrip**

**PVC, Metal, and Plastic  
Bonding Adhesive**

- Designed for CPVC & PVC boards
- 5-8 minute working time
- Sandable in 30-40 min
- Easy to use
- White color matches most PVC products



**Chem-Set™  
6105**

**Fast Set Polyolefin Bonder**

- Bonds polyolefins like HDPE & PP
- Adhesion to a wide variety of substrates
- Full cure at room temperature
- Fast-set formula
- No primer required
- Good impact strength



**Chem-Set™  
412**

**Clear Electronic Potting Silicone**

- Medium viscosity
- Low linear shrinkage
- Cure at room temperature or at elevated temperatures
- UL 94 HB listed, control number: QMFZ2.E205830
- Self-leveling, optically clear



**Chem-Set™  
605**

**Quick Set Acrylic Adhesive**

- General purpose plastic bonding adhesive
- 1:1 mix ratio
- Non-sagging formula
- Working time: 2-3 min. @ 72° F
- Fixture time: 8-10 min. @ 72° F
- Functional cure: 3/4-1 hr @ 72° F

**PLEXUS ADHESIVES**



**PLEXUS™  
MA830**

**Two Part Methacrylate Adhesive**

- Primerless adhesion to many metals, most thermoplastics, and composites
- Fast working time 4 - 6 mins
- Exceptional strength and elongation



**PLEXUS™  
AO420/MA420**

**Two Part Methacrylate Adhesive**

- Rapidly bonds (4-6 min) metals, plastics, and composites
- Exceptional strength, elongation, and fatigue resistance
- Ideal for a wide range of materials, including thermoplastics, composites, and coated or raw metals



**PLEXUS™  
MA300**

**Two Part Methacrylate Adhesive**

- Medium working time 3-6 mins
- Easy to use 1:1 ratio
- Fast, consistent strength development at room temp
- High strength, stiffness and toughened



**PLEXUS™  
MA8110**

**Two Part Methacrylate Adhesive**

- For bonding galvanized coated metals in particular
- Hot dipped G90 and G60
- Easy to use 1:1 ratio product
- Lower odor formula
- Excellent fatigue and impact resistance

**HIGH BOND TAPES**



**Chem-Set™**  
**VST 6120**  
High Bond Tape  
47 mil (.047")

- High tensile strength
- Moisture/solvent resistant with outstanding weathering
- Shock, vibration and noise damping properties
- White or Grey



**Chem-Set™**  
**VST 6364**  
Foam Acrylic Tape  
25 mil (.025")

- High tensile strength
- Moisture and solvent resistant
- Shock, vibration and noise damping properties
- Creates a permanent seal across entire surface



**Chem-Set™**  
**VST 6110**  
High Performance  
General Purpose Tape  
32 mil (.032")

- Double sided, acrylic based
- Excellent adhesion performance on plastics, glass, steel, aluminum and ceramics
- White or Grey



**Chem-Set™**  
**VST 6160**  
High Performance  
General Purpose Tape  
62 mil (.062")

- Double sided, acrylic based
- Excellent adhesion performance on plastics, glass, steel, aluminum and ceramics
- White or Grey

**TRANSPARENT TAPES**



**Chem-Set™**  
**VST 6100C**  
Clear High Bond Tape  
40 mil (.040")

- 100% acrylic based
- Resistant to UV, aging, softening agents and solvents
- Resistant to the peel and shear

Compare to **3M-4910**



**Chem-Set™**  
**VST 3050C**  
Transparent Direct Foam  
20 mil (.020")

- Double sided, acrylic based
- Excellent adhesion on plastics, glass, stainless steel, galvanized steel, anodized and coated aluminum

Compare to **3M-4905**



**Chem-Set™**  
**VST 3025C**  
Ultra-Thin Transparent Tape  
10 mil (.010")

- 100% acrylic based
- Excellent adhesion on glass, glass epoxy, stainless steel, galvanized steel, anodized and coated aluminum

Compare to **3M-F9473PC**



**Chem-Set™**  
**VST 6150C**  
Clear Transparent Industrial Tape  
60 mil (.060")

- Advantages of the series include vibration dampening
- Very good sealing properties and resistance to weathering, aging, yellowing (UV influence)

Compare to **3M-4915**

**SPECIALTY TAPES**



**Chem-Set™**  
**VST LSE Tapes**  
Low Surface Energy Tape

- Various medium and low surface energy plastics
- Powder coatings
- Clear coats
- Ceramic car paints



**Chem-Set™**  
**P217**  
General Purpose Masking Tape

- Med-high adhesion for packaging, bundling, holding, splicing and tabbing tape
- Excellent adhesion and quick stick to metal, vinyl, glass, rubber and plastic
- Conforms to irregular surfaces



**Chem-Set™**  
**P621**  
Blue Painters Tape

- Ideal for painted walls, trim, glass, woodwork and metal
- Environmentally safe
- Comes in sizes from 3/4" to 3"
- Works on a variety of surfaces
- Designed to prevent dry out or keep its holding power



**Chem-Set™**  
**PEF06R**  
Double Coated Foam Tape

- Used for mounting and joining nameplates, signs, small die cast parts, mirrors, maps, etc
- Higher adhesion to low-energy surfaces (some plastics, films)
- Suitable for applications where moisture resistance is required

**TESA HIGH BOND TAPES**



27 YD ROLLS



**7054 ACXplus**

For Optically Clear Bonding  
20 mil (.020")

- Transparent acrylic core tape
- Non-yellowing
- Unmatched environmental resistance
- High temperature resistance: 392°F (20 min); 212°F (long term)



27 YD ROLLS



**7055 ACXplus**

For Optically Clear Bonding  
40 mil (.040")

- Transparent acrylic core tape
- Non-yellowing
- Unmatched environmental resistance
- High temperature resistance: 392°F (20 min); 212°F (long term)



27 YD ROLLS



**7063 ACXplus**

For Hard-To-Bond Substrates  
32 mil (.032")

- Black tackified acrylic core tape
- Unmatched environmental resistance
- Superior performance on powder coated and lower energy surfaces



27 YD ROLLS



**7065 ACXplus**

For Hard-To-Bond Substrates  
47 mil (.047")

- Black tackified acrylic core tape
- Unmatched environmental resistance
- Superior performance on powder coated and lower energy surfaces

**TESA SPECIALTY TAPES**



**7074 Black Foam Tape**

High-Performance Acrylic  
Foam Tape

1/4" (6mm), 3/8" (9mm), 1/2" (12mm), 3/4" (19mm), 1" (25mm)

- Designed for demanding outdoor bonding applications especially in combination with the Tesa Adhesion Promoters



**4334 Precision Mask**

Yellow General Purpose  
Masking Tape

1" (25mm) & 2" (51mm)

- Razor sharp paint edges
- Easily removable up to 5 months after application
- 3.5 mil

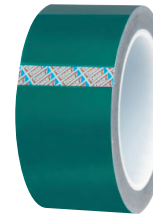


**53120 General Purpose**

Creped Paper General Purpose  
Masking Tape

3/4" (19mm), 1" (25mm),  
1 1/2" (38mm), 2" (51mm)

- Adheres to a variety of surfaces
- Light-duty bundling
- Packaging and closing
- Light-duty masking



**50600 Powder-Coating**

Green, Masking Tape For  
Powder Coating

1" (25mm) & 2" (51mm)

- Polyester backing with a silicone adhesive
- One piece removal without leaving residue
- High temperature resistance: up to 220°C /428°F (30min.)

**FILMIC TAPES & PRIMERS**



55 YD ROLLS



**61010**

Transparent Double-Sided Tape  
8 mil (.008")

- Mounting of several parts in electronic devices
- Self-adhesive mounting of rubber/EPDM profiles
- Transparent PET filmic tape
- Great for interior mounting



60 YD ROLLS



**4970**

PVC-Film Acrylic Tape  
10 mil (.010")

- High Strength
- Durable
- High temp resistance: 392°F (20 min); 212°F (long term)



**60150**

Universal Adhesion Promoter

- Recommended for various plastics, powder coated surfaces, zinc, steel, and PP-EPDM
- Improves the bonding strength of Tesa® ACXplus tapes
- The shelf life of this product amounts to at least 12 months



**60151**

Glass Adhesion Promoter

- Developed to ensure permanent bonding and moisture resistance on glass substrates
- Improves the bonding strength of Tesa® ACXplus tapes
- The shelf life of this product amounts to at least 12 months

**ADHESIVES & SEALANTS**



**BoaBond**

**Advanced Hybrid Adhesive**

- Fast grab adhesive for easy vertical installation
- High strength, tough, durable bonds
- No solvents or isocyanates
- VOC compliant
- Bonds wet or damp materials

Paintable!



**Chem-Set™ MS-35**

**Multi-purpose Hybrid Adhesive/Sealant**

- Bonds to most substrates without priming
- Wide range of applications
- Cures fast and remains flexible
- Vibration damping
- Improved aesthetics



**Chem-Set™ MS35 Ultra Clear**

**Ultra-clear Hybrid Adhesive/Sealant**

- Bonds to most substrates without priming
- Wide range of applications
- Cures fast and remains flexible
- Vibration damping
- Ideal for applications requiring clear joints



**Sikaflex 221**

**High Strength Polyurethane Adhesive/Sealant**

- Non-sag, low odor
- Sandable and paintable
- Non-corrosive
- Can be overpainted
- Lower VOC's
- White, grey, black, aluminum clear joints

**SILICONE, CAULK AND ANCHORING ADHESIVES**



**Chem-Set™ RTV 4500**

**General Purpose One-Component 100% RTV Silicone Sealant**

- High strength
- Excellent weatherability
- UV stable
- Non-yellowing
- VOC compliant



**AnchorFix2**

**Anchoring Epoxy**

- For stud mounting in concrete and masonry base materials
- Fast curing
- High load capacity
- Non-sag and low odor
- Comes with 2 static mixers



**SILCO INCORPORATED PB-3**

**Siliconized Acrylic Latex Sealant**

- Non-sag and low odor
- Paintable
- Water clean-up
- Exterior/interior use
- Mildew resistant
- Non-yellowing



**ASI American Sealants, Inc. 335**

**Neutral Cure Silicone Sealant/Adhesive**

- 100% silicone sealant
- High performance, excellent adhesion
- Resistant to UV degradation and weathering
- Mold and mildew resistant

**DISPENSERS & MIXING TIPS**

**50 ML**

**CCH50G**



- Easily converts to 1:1, 2:1, 4:1, 10:1 mix ratio

**210 ML**

**3-203-XSP**



- 18:1 thrust ratio
- Easily converts to 1:1, 1:1/2:1 mix ratio

**200/400 ML**

**VR200XSP**



- 26:1 Thrust ratio
- VR400XSP**
- 
- 26:1 thrust ratio

**375 ML**

**535XSP**



- 26:1 thrust ratio
- Easily converts to 1:1, 2:1, 4:1 mix ratio

**CX 404 ML**

**CCM380**



- 18:1 thrust ratio
- Easily converts to 1:1, 2:1, 4:1, 10:1 mix ratio

**TAH 190-620**  
STATIC MIXING NOZZLE



**MCQ 08-24T**  
STATIC MIXING NOZZLE



**TAH 160-824**  
STATIC MIXING NOZZLE



**CON-MBQ 05-16L**  
STATIC MIXING NOZZLE



**MFHX 08-18T**  
STATIC MIXING NOZZLE



**RIT16336-0242**  
STATIC MIXING NOZZLE



**RIT13600-3102**  
STATIC MIXING NOZZLE



**CON-MFOX 08-24T**  
STATIC MIXING NOZZLE



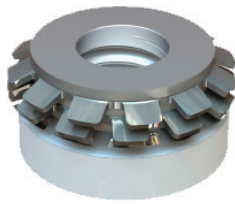
**MFHX 10-18T**  
STATIC MIXING NOZZLE



**FISD04**  
SILICONE/SEALANT NOZZLE



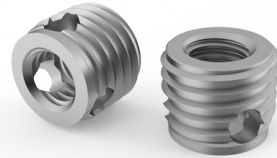
**SPECIALTY FASTENERS**



**Specialinsert**  
**KEEP-NUT**

**Press-In Self-Anchoring Inserts**

- Simple hole preparation
- Quick installation
- No need for resins or adhesives
- Thread stops before end of insert



**Specialinsert**  
**307 Self-tapping Insert**

**Threaded Inserts for Plastics**

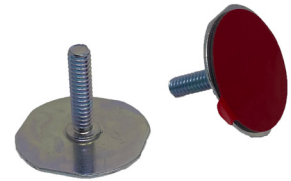
- Self threading inserts for plastics
- Great for flat-cut acrylic letters
- Fast application with cordless drill



**Specialinsert**  
**TC/INT Cross-Nut**

**Rivet-Nut with High Grip Range**

- Superior pullout resistance in soft materials
- Available in 10-24, 1/4-20, 3/8-16 and metric sizes
- Aluminum, stainless steel or zinc-coated steel
- Wide grip range



**Specialinsert**  
**VST Bonding Fasteners**

**Bonding Fasteners with VST Pre-applied**

- Instant grab bonding fasteners with pre-applied tape
- Peel and stick application
- High bond tape for durable assembly
- No drilling, welding or liquid adhesives

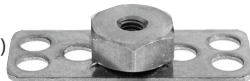


**M1B23**  
(38MM / 1.5")  
ROUND

**M1B38**  
(38MM / 1.5")  
ROUND



**F1T38**  
(38MM / 1.5")  
RECTANGLE



**F2B23**  
(23MM / 0.90")  
ROUND



**F1B38**  
(38MM / 1.5")  
ROUND



**F2B38**  
(38MM / 1.5")  
ROUND



**Specialinsert**  
**Bonding Fasteners**

**M1-Male Threaded Bolt Studs**

- Surface mounted fasteners with male studs
- Available in a variety of threads, base types and lengths
- Mount with structural adhesives; no drilling required
- Zinc plated or Stainless Steel

**Specialinsert**  
**Bonding Fasteners**

**F1-Hex Nuts**

- Surface mounted fasteners with female hex nut
- Available in a variety of threads and base types
- Mount with structural adhesives; no drilling required
- Zinc plated or Stainless Steel

**Specialinsert**  
**Bonding Fasteners**

**F2-Female Collar**

- Surface mounted fasteners with female threaded collar
- Available in a variety of threads, base types and lengths
- Mount with structural adhesives; no drilling required
- Zinc plated or Stainless Steel

**Specialinsert**  
**Cable Tie Mount**

**Stainless Steel Fasteners**

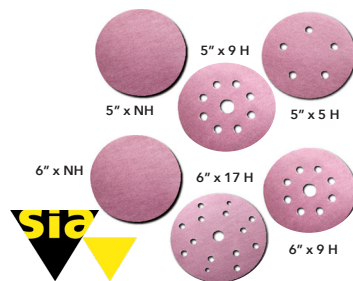
- Secure wires, cables and other components with no drilling or welding
- Surface mounted with structural adhesive or tape
- More durable than similar plastic components
- Perfect for marine, automotive, aerospace, and electronics applications

**ABRASIVES**



**Chem-Set™**  
**GEM Orbital Sander**  
11" Orbital Sander with Drive Pad

- Sands much larger area
- Polishes and finishes better than the human hand!
- Saves time and labor!



**Siaspeed**  
**PSA and H&L Sanding Discs**

- Sanding solid surfaces
- Sanding down and fine sanding solid wood
- Keying thick layers of varnish
- Sanding down painted surfaces, primers and fillers



410 Pike Road | Huntingdon Valley, PA 19006  
Email: [sales@chemical-concepts.com](mailto:sales@chemical-concepts.com)  
Office: 800.220.1966

order online:  
[chemical-concepts.com](http://chemical-concepts.com)



# WE'RE HERE FOR YOU **TALK TO THE MANUFACTURING EXPERTS**

Interested in a product? Want to learn more about how we can help your manufacturing business?

**Get in touch with the experts.**

**SOUTHEAST**



**Matt Avin**  
Territory Sales Representative  
678-790-4513

**GREAT LAKES**



**Teri Obloy**  
Territory Sales Representative  
330-942-5273

**MID-ATLANTIC**



**Rick Ferrera**  
Territory Sales Representative  
856-770-4495

**SOUTH ATLANTIC**



**John Burke**  
Territory Sales Representative  
267-885-3976



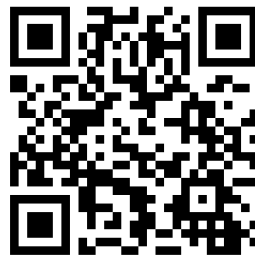
**NORTHEAST**



**Michael Smith**  
Territory Sales Representative  
267-250-6912



**Andrew Morris**  
National Sales Manager  
267-218-3481



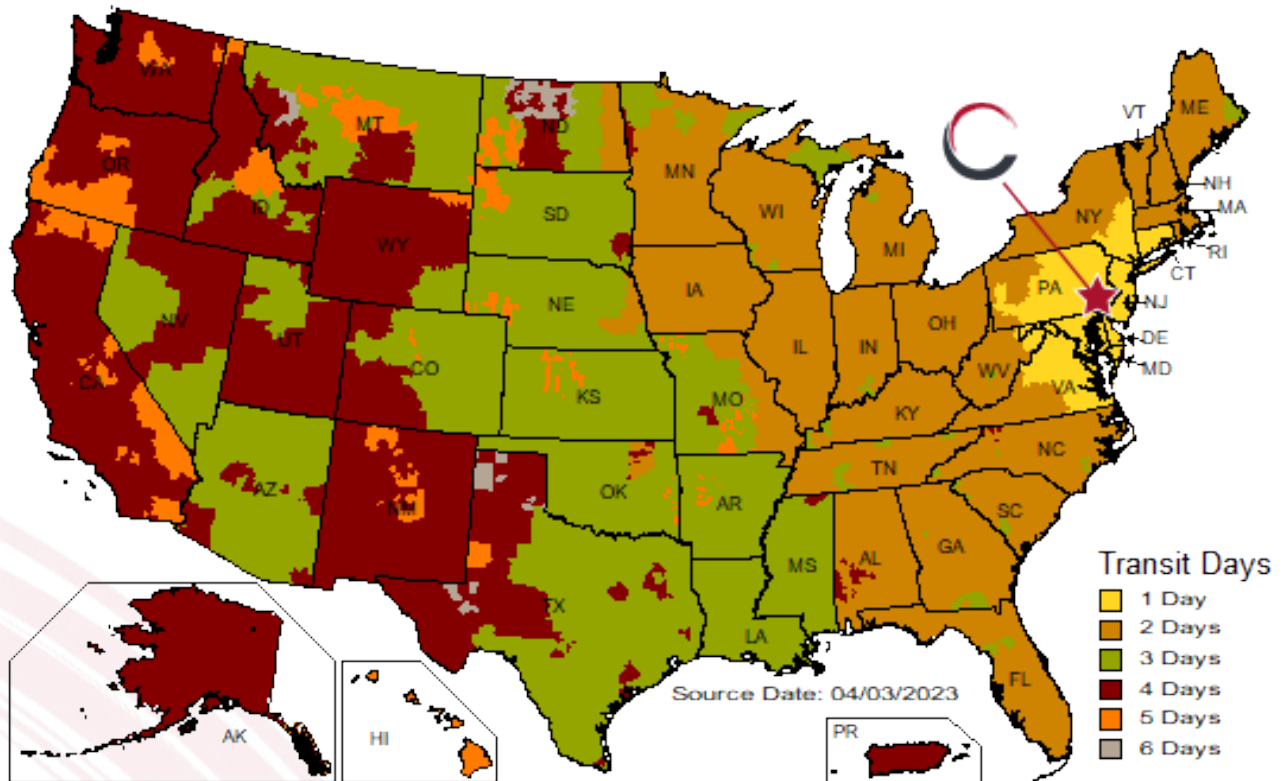
**CONTACT US**  
[chemical-concepts.com/contact-us/](http://chemical-concepts.com/contact-us/)



**Craig Zelle**  
Vice President, Sales  
215-264-7065

SHOP ALL YOUR  
**SIGN ADHESIVE NEEDS AT**


CHEMICAL-CONCEPTS.COM



## How to Order?

Get in touch with us today.

 Toll Free:  
800.220.1966

 [orders@chemical-concepts](mailto:orders@chemical-concepts)



