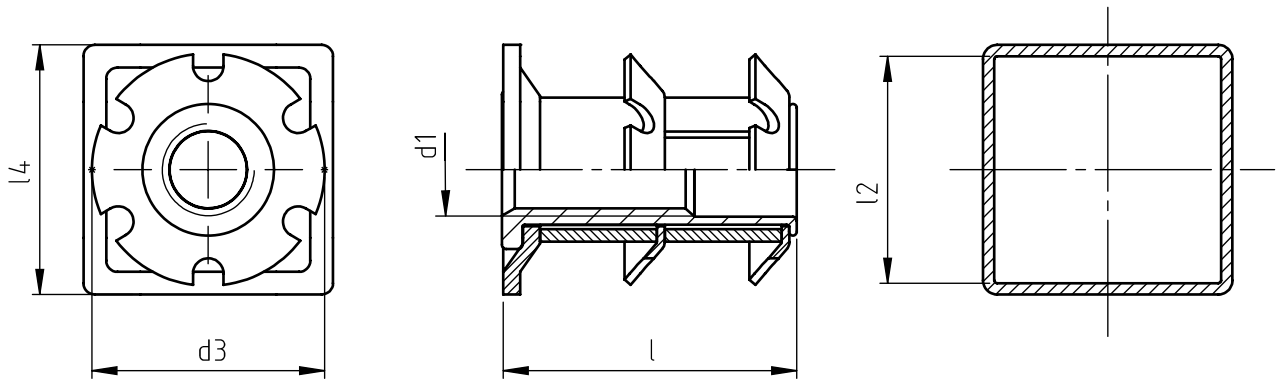


Application: at the end of square metallic and non-metallic tubes.
 Assembly: by pressure.



code	d1	l2*	d3	l	l4
ITT2Q/M 8/15.7	M 8	15,7 ÷ 17,1	18,1	26	19
ITT2Q/M 8/18.9		18,9 ÷ 20,2	20,9		22
ITT2Q/M 8/22.1		22,1 ÷ 23,4	24,7		25
ITT2Q/M 8/25.3		25,3 ÷ 26,6	27,5		28
ITT2Q/M 8/26.6		26,6 ÷ 27,6	28,9		30
ITT2Q/M 8/28.4		28,4 ÷ 29,8	30,7		32
ITT2Q/M 8/34.8		34,8 ÷ 36,1	37,9		38
ITT2Q/M10/22.1	M10	22,1 ÷ 23,4	24,7	26	25
ITT2Q/M10/26.6		26,6 ÷ 27,6	28,8		30
ITT2Q/M10/34.8		34,8 ÷ 36,1	37,9		38

Non binding dimensions, expressed in mm.

* It is advisable to carry out some preliminary assembling tests in order to determine the best product.

For proper use it is suggested to use a locknut for the pin.

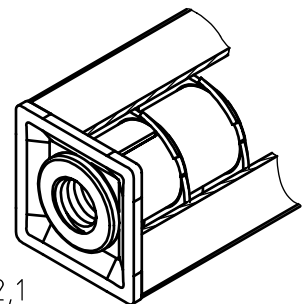
After the insertion of the Crown Nut do avoid heat treatments, galvanization and other heating operations that might compromise the characteristics of the product.

Standard

On demand

Not manufactured

Material: steel
 Example: 2 crowns flange insert
 for square tubes, M 8 threaded,
 tube internal dimension 23x23 mm:
 ITT2Q/M 8/22,1



ITT2Q/M 8/22,1