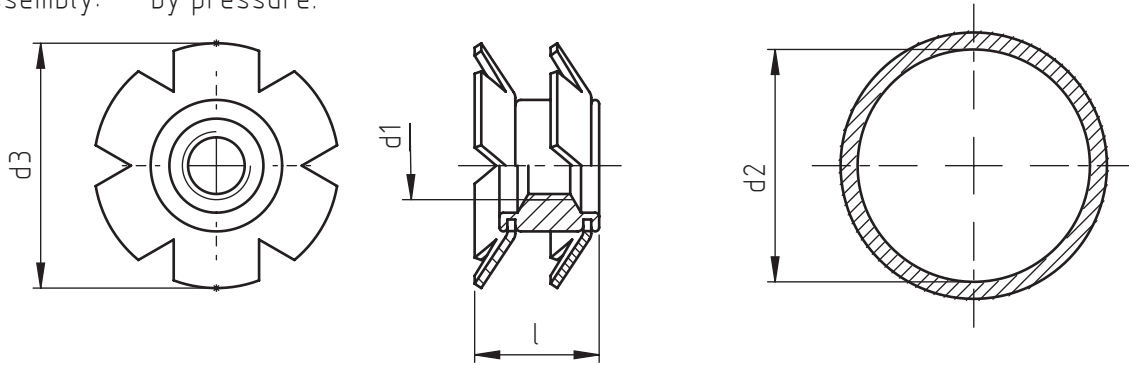


Application: at the end of square metallic and non-metallic tubes.  
 Assembly: by pressure.



code	d1	d2 *	d3	l
ITT2S/M 6/11.8	M 6	11,8 ÷ 12,2	12,8	12,5
ITT2S/M 6/12.6		12,6 ÷ 13,2	13,6	10
ITT2S/M 6/13.2		13,2 ÷ 13,8	14,7	12,5
ITT2S/M 6/13.8		13,8 ÷ 14,2	14,7	12,5
ITT2S/M 6/15.2		15,2 ÷ 16,1	17	10
ITT2S/M 6/15.7		15,7 ÷ 17,1	18,1	9,4
ITT2S/M 6/16.4		16,4 ÷ 17,7	18,7	9,5
ITT2S/M 6/17.9		17,9 ÷ 19,3	19,7	9,5
ITT2S/M 6/18.9		18,9 ÷ 20,2	21	9,5
ITT2S/M 6/19.5		19,5 ÷ 20,9	21,7	11
ITT2S/M 6/21.4		21,4 ÷ 22,4	23,2	10
ITT2S/M 6/22.1		22,1 ÷ 23,4	24,6	10
ITT2S/M 6/22.7		22,7 ÷ 24,0	25,4	10,5
ITT2S/M 6/24.6		24,6 ÷ 25,6	26,6	9,5
ITT2S/M 6/25.3		25,3 ÷ 26,6	27,6	10
ITT2S/M 6/26.0		26,0 ÷ 28,0	28,4	10
ITT2S/M 6/28.4		28,4 ÷ 29,8	30,6	11,5
ITT2S/M 6/29.8		29,8 ÷ 30,8	31,8	10
ITT2S/M 6/31.7		31,7 ÷ 32,9	33,8	13
ITT2S/M 8/15.2		M8	15,2 ÷ 16,1	17
ITT2S/M 8/15.7	15,7 ÷ 17,1		18,1	12,5
ITT2S/M 8/16.4	16,4 ÷ 17,7		18,7	12,4
ITT2S/M 8/17.9	17,9 ÷ 19,3		20	13
ITT2S/M 8/19.5	19,5 ÷ 20,9		21,5	14,5
ITT2S/M 8/21.4	21,4 ÷ 22,4		23,4	13
ITT2S/M 8/22.7	22,7 ÷ 24,0		25,4	14
ITT2S/M 8/24.6	24,6 ÷ 25,6		26,5	13,3
ITT2S/M 8/25.3	25,3 ÷ 26,6		27,6	13,5
ITT2S/M 8/26.0	26,0 ÷ 28,0		28,4	13
ITT2S/M 8/28.4	28,4 ÷ 29,8		30,6	15
ITT2S/M 8/29.8	29,8 ÷ 30,8		31,8	14
ITT2S/M 8/31.7	31,7 ÷ 32,9		33,6	15
ITT2S/M 8/34.8	34,8 ÷ 36,1		37	16
ITT2S/M 8/36.0	36,0 ÷ 38,0		39	15,3
ITT2S/M 8/38.4	38,4 ÷ 40,4		41,3	15,5
ITT2S/M 8/41.4	41,4 ÷ 42,4	43,5	16,4	

**Chemical Concepts**  
 Our expertise is your solution.  
[chemical-concepts.com](http://chemical-concepts.com)  
**800.220.1966**

SPECIALINSERT - COMMITS ITSELF TO CONTINUOUSLY IMPROVE ITS PRODUCTS - IT RESERVES THE RIGHT TO CHANGE THEIR TECHNICAL AND STRUCTURAL CHARACTERISTICS WITHOUT PRIOR NOTICE - ALL RIGHTS ARE RESERVED AND THE DUPLICATE, EVEN PARTIAL, OF THESE DOCUMENTS, AS WELL AS ITS DISTRIBUTION TO THIRD PARTIES, ARE FORBIDDEN, UNLESS OTHERWISE AND EXPRESSLY AUTHORIZED BY SPECIALINSERT.



code	d1	d2 *	d3	l
ITT2S/M10/17.9	M10	17,9 ÷ 19,3	20,3	13
ITT2S/M10/18.9		18,9 ÷ 20,2	21	12,5
ITT2S/M10/19.5		19,5 ÷ 20,9	21,7	12,5
ITT2S/M10/21.4		21,4 ÷ 22,4	23,2	13,5
ITT2S/M10/22.1		22,1 ÷ 23,4	25	14
ITT2S/M10/24.6		24,6 ÷ 25,6	26,2	13,8
ITT2S/M10/26.0		26,0 ÷ 28,0	28,9	15
ITT2S/M10/28.4		28,4 ÷ 29,8	30,7	13,5
ITT2S/M10/31.7		31,7 ÷ 32,9	33,8	14,3
ITT2S/M10/34.8		34,8 ÷ 36,1	37,3	16,5
ITT2S/M10/36.0		36,0 ÷ 38,0	39	15,2
ITT2S/M10/38.4		38,4 ÷ 40,4	41,6	16
ITT2S/M10/47.5		47,5 ÷ 48,8	50	17
ITT2S/M10/56.0		56,0 ÷ 58,0	60	16,8

Non binding dimensions, expressed in mm.

\* It is advisable to carry out some preliminary assembling tests in order to determine the best product.

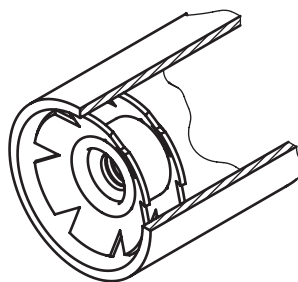
After the insertion of the Crow Nut do avoid heat treatments, galvanization and other heating operations that might compromise the characteristics of the product.

 Standard

 On demand

 Not manufactured

Material: steel  
Example: 2 crowns without flange insert for round tubes, M 6 threaded, internal diameter 20,5 mm:  
ITT2S/M 6/19,5



ITT2S/M 6/19,5