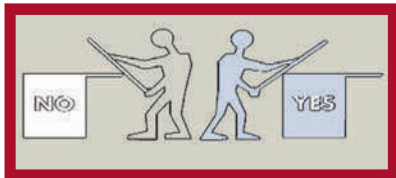
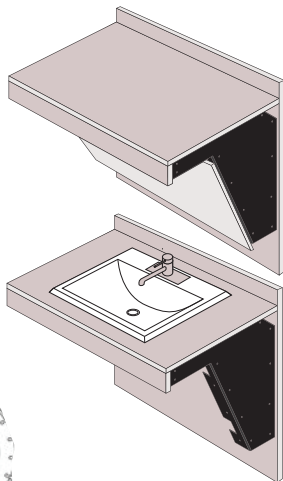


Counter Top Setting Instructions



NEVER set tops directly on plate or bracket at an angle when setting tops.

ALWAYS set tops from opposite side of stud wall or from front of cabinet.



Chemical Concepts
410 Pike Road
Huntingdon Valley, PA 19006

Order online at counterbalanceshop.com or call 1.800.220.1966

These are general guidelines for installation methods, and may not apply to your application. Always consult a qualified contractor and follow their recommendations for proper installation.

MADE IN USA

CounterBalance® ADA Bracket CCH-CBADA21BL-IM

Sold in multiples of 2



Check out our installation videos:
[youtube.com/user/ShopCB](https://www.youtube.com/user/ShopCB)



COUNTER

BALANCE®

The support you don't see.

Installation Instructions

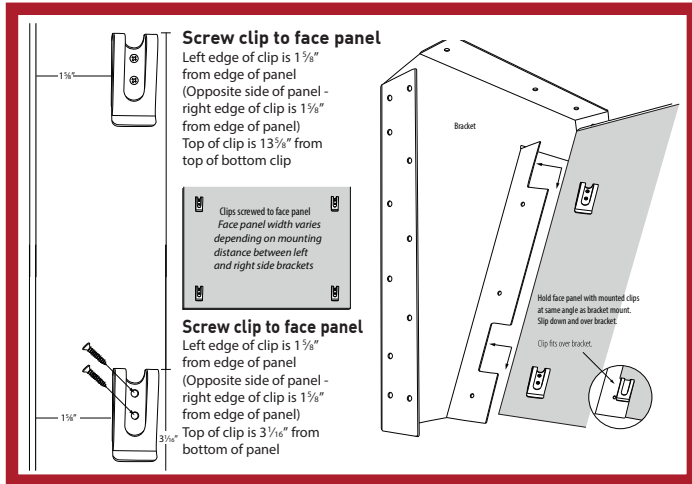
The CounterBalance **ADA Vanity Bracket** is the handicap accessible solution for those tired of hitting their knees on most other sink fixtures.

ADA Bracket Install

- 1) Mount ADA Brackets to the wall securing it to meet local building code required loading requirements for the vanity front edge.

Note: Double studs or metal mounting plates are recommended for a stronger installation.

Note: Use ADA bowls when using the ADA Brackets.



- 2) Install Spring Clips to the back of the Face Board.
- 3) Spring Clips should be installed with 12 3/4 inches between the top of the top bracket and the top of the bottom bracket.
- 4) There will be some side to side allowance on the clip installation.
- 5) Be sure to allow 1" clearance between the top of your Face Board and the bottom of the top portion of the bracket to allow the Face Board to slide up for removal.

Optional Finishing Panel Installation

