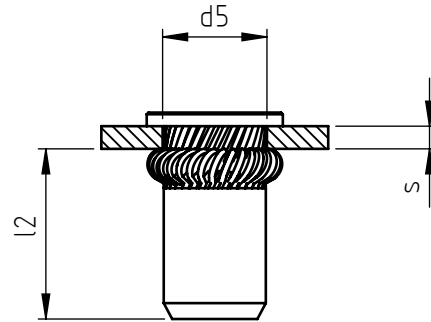
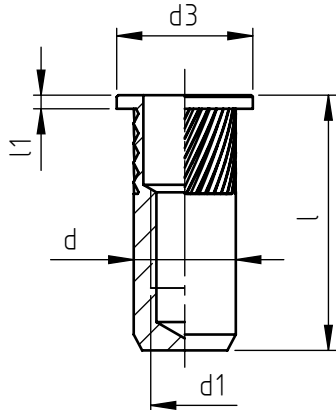


Application: metal and not metal sheets.
Assembly: with special hand or pneumatic tools.



code	steel	stainless steel	s grip	l	d1 6H	d	d3	l1	d5 +0,15 0	l2 *
9204A/M 3/ __Zl	8Zl	XZl	0,5 ÷ 2,0	13	M 3	5	8	0,8	5	9,5
9204B/M 3/ __Zl	8Zl	XZl	2,0 ÷ 3,5	14,5						
9204A/M 4/ __Zl	8Zl	XZl	0,5 ÷ 2,0	15	M 4	6	9	0,8	6	11
9204B/M 4/ __Zl	8Zl	XZl	2,0 ÷ 4,0	17						
9204A/M 5/ __Zl	8Zl	XZl	0,5 ÷ 2,5	18	M 5	7	10	1	7	12,5
9204B/M 5/ __Zl	8Zl	XZl	2,5 ÷ 4,5	20						
9204A/M 6/ __Zl	8Zl	XZl	0,5 ÷ 3,0	22,5	M 6	9	12	1,2	9	16
9204B/M 6/ __Zl	8Zl	XZl	3,0 ÷ 5,5	25						
9204A/M 8/ __Zl	8Zl	XZl	0,5 ÷ 3,5	25	M 8	11	14	1,3	11	17,5
9204B/M 8/ __Zl	8Zl	XZl	3,5 ÷ 6,0	27,5						
9204A/M10/ __Zl	8Zl	XZl	0,5 ÷ 3,5	30	M10	13	16	1,5	13	21,5
9204B/M10/ __Zl	8Zl	XZl	3,5 ÷ 6,0	32,5						
9204A/M12/ __Zl	8Zl	--	0,5 ÷ 3,5	36,5	M12	15	18	2	15	27,5
9204B/M12/ __Zl	8Zl	--	3,5 ÷ 6,5	39,5						

Non binding dimensions, expressed in mm.

* Dimension determined from the average of the grip "s" min and max values.

For type B, the knurling might start under the head.

Standard
 On demand
 -- Not manufactured

Ref. UNI 9204 standard

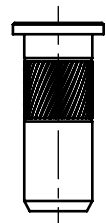
Material: steel nr.1.0718
stainless steel nr.1.4305

Finishing: steel: white zinc-plated
stainless steel: natural

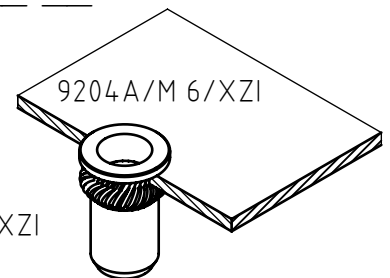
Tolerances: according to UNI standards EN 22768-1

Thread: ISO 6 H metric

Example: blind threaded nut, cylindrical head,
round close-end knurled shank,
stainless steel, grip 2,0 mm, M 6 thread: 9204A/M 6/XZl



_____ / _____ / 8Zl
 _____ / _____ / XZl



SPECIALINSERT - COMMITS ITSELF TO CONTINUOUSLY IMPROVE ITS PRODUCTS - IT RESERVES THE RIGHT TO CHANGE THEIR TECHNICAL AND STRUCTURAL CHARACTERISTICS WITHOUT PRIOR NOTICE - ALL RIGHTS ARE RESERVED AND THE DUPLICATION, EVEN PARTIAL OF THESE DOCUMENTS, AS WELL AS ITS DISTRIBUTION TO THIRD PARTIES ARE FORBIDDEN, UNLESS OTHERWISE AND EXPRESSLY AUTHORIZED BY SPECIALINSERT.