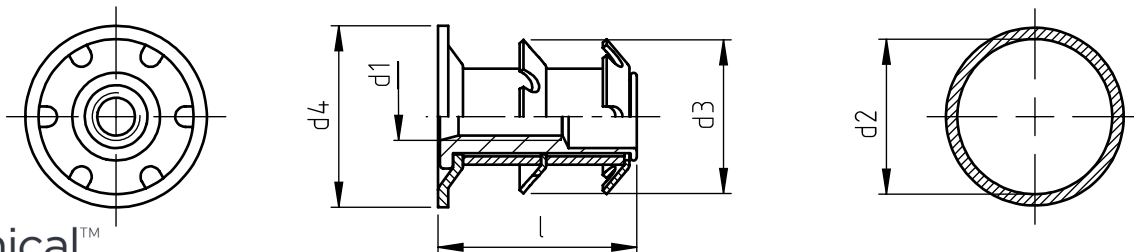


Application: at the end of square metallic and non-metallic tubes.
 Assembly: by pressure.



Chemical Concepts
 Our expertise is your solution.
 chemical-concepts.com
800.220.1966

code	d1	d2 *	d3	l	d4
ITT2T/M 8/14.8	M 8	14,8 ÷ 16,1	17,0	26	19
ITT2T/M 8/16.4		16,4 ÷ 17,7	18,7		19
ITT2T/M 8/17.9		17,9 ÷ 19,3	19,7		22
ITT2T/M 8/18.9		18,9 ÷ 20,2	21,0		22
ITT2T/M 8/19.5		19,5 ÷ 20,9	21,6		22
ITT2T/M 8/21.4		21,4 ÷ 22,4	23,5		25
ITT2T/M 8/22.1		22,1 ÷ 23,4	24,6		25
ITT2T/M 8/22.7		22,7 ÷ 24,0	25,4		25
ITT2T/M 8/24.6		24,6 ÷ 25,6	26,5		28
ITT2T/M 8/25.3		25,3 ÷ 26,6	27,6		29
ITT2T/M 8/26.0		26,0 ÷ 28,0	28,9		30
ITT2T/M 8/28.4		28,4 ÷ 29,8	30,8		32
ITT2T/M 8/31.7		31,7 ÷ 32,9	33,7		35
ITT2T/M 8/34.8		34,8 ÷ 36,1	37,1		38
ITT2T/M 8/56.0		56,0 ÷ 58,0	59,9		60
ITT2T/M10/18.9	M10	18,9 ÷ 20,2	21,6	26	22
ITT2T/M10/21.4		21,4 ÷ 22,4	23,5		25
ITT2T/M10/22.7		22,7 ÷ 24,0	25,4		25
ITT2T/M10/24.6		24,6 ÷ 25,6	26,5		28
ITT2T/M10/26.0		26,0 ÷ 28,0	28,9		30
ITT2T/M10/28.4		28,4 ÷ 29,8	30,8		32
ITT2T/M10/31.7		31,7 ÷ 32,9	33,7		35
ITT2T/M10/34.8		34,8 ÷ 36,1	37,1		38
ITT2T/M10/36.0		36,0 ÷ 38,0	39,0		40

Non binding dimensions, expressed in mm.

* It is advisable to carry out some preliminary assembling tests in order to determine the best product.

For proper use it is suggested to use a locknut for the pin.

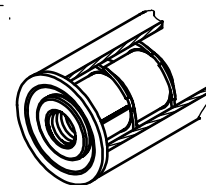
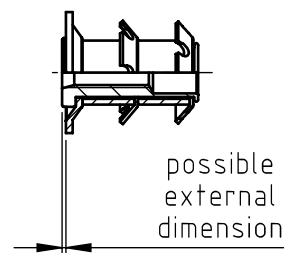
The upper side of the threaded bush might come out from the flange due to technical needs, changing the L lenght.

Flanged head types are developed to being used with wheels or adjustable feet.

After the insertion of the Crow Nut do avoid heat treatments, galvanization and other heating operations that might compromise the characteristics of the product.

■ Standard □ On demand - - - Not manufactured

Material: steel
 Example: 2 crowns flange insert for round tubes,
 M 8 threaded, internal diameter 20,5 mm: ITT2T/M 8/19,5



SPECIALINSERT - COMMITS ITSELF TO CONTINUOUSLY IMPROVE ITS PRODUCTS - IT RESERVES THE RIGHT TO CHANGE THEIR TECHNICAL AND STRUCTURAL CHARACTERISTICS WITHOUT PRIOR NOTICE - ALL RIGHTS ARE RESERVED AND THE DUPLICATE, EVEN PARTIAL OF THESE DOCUMENTS, AS WELL AS ITS DISTRIBUTION TO THIRD PARTIES ARE FORBIDDEN, UNLESS OTHERWISE AND EXPRESSLY AUTHORIZED BY SPECIALINSERT.